

NEW!

ColorSave BB - Gravimetric Batch-Blender

**LIAD introduces the ColorSave BB --
Highly Advanced Gravimetric Batch-Blender**



Technical Data

- Low size and reduced weight relative to high capacities.
- High dosing accuracy – 0.05% of batch weight.
- Capable of blending up to 4 ingredients, at a rate of up to 200 kg/hr.
- Horizontal mixer enables complete emptying from batch to batch.
- Unique and sophisticated mechanical design enables fast removal, cleaning and refilling of new material in any hopper, without stopping the blender's operation.
- Simple and user friendly control, including recipes management and RS485 communication output.
- High immunity and low sensitivity to vibrations and/or shocks caused by the molding machines
- All parts are made of 304 Stainless Steel

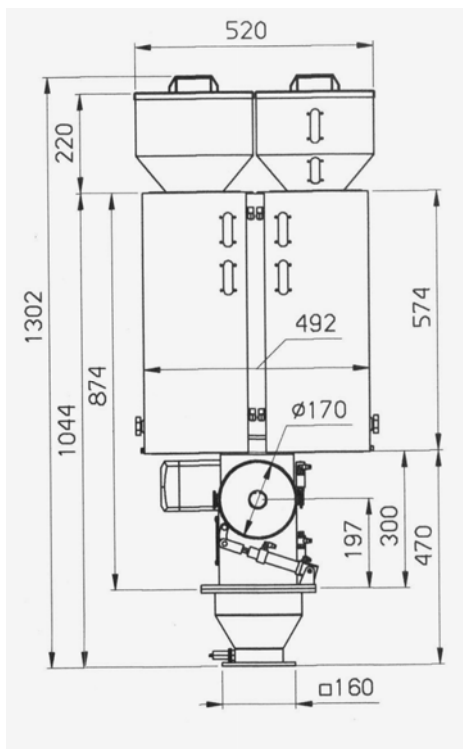
Removal, cleaning and new material replacement is performed while the hopper door is opened and the feeding hopper is displaced out of the mixing chamber, thus enabling it without stopping the blender's operation



Materials removal and replacement



Mixing Agitator



Dimensions (mm)

